

VICTORIA GOLD CORP - MAC RIDGE PROJECT



LOCATION:

62 miles north of Elko, Independence Range, Elko County, Nevada.

HOLDINGS:

126 owned unpatented claims.

Target:

Carlin type gold.

LAND STATUS:

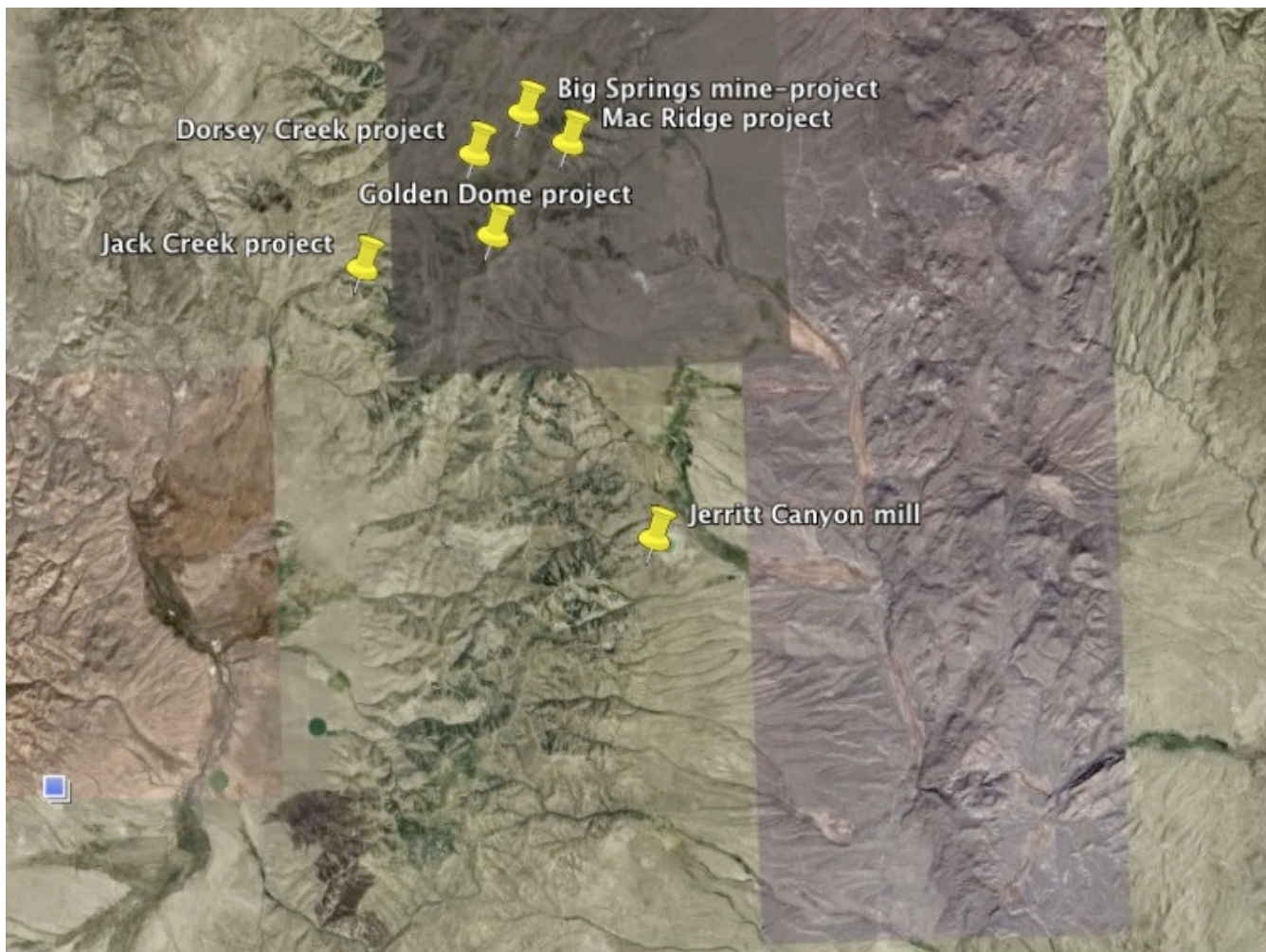
Forest Service

HOLDING COSTS:

\$17,077/year (county and BLM).

Mac Ridge open pit in the background with Hanson Creek Formation in the foreground.

- Drill defined 51,299 oz Inferred NI 43-101 compliant gold resource.
- District scale project when combined with Big Springs, Mac Ridge and Golden Dome.
- Located within the Independence gold belt.
- Past open pit production of ~23,400 oz Au.
- 20 miles from Jerritt Canyon milling facilities.
- Several soil and rock chip Au geochemical anomalies.
- Gold mineralization discovered in “lower plate” rocks.
- Resource can be expanded by further drilling.



GEOLOGY

Rocks exposed on the property are dominated by Pennsylvanian-Permian Overlap Assemblage dolomite, silty dolomite, argillite, black shale, limestone, conglomerate and calcareous clastics. There are also lesser exposures of Ordovician Valmy quartzite and Hanson Creek Formation limestone and dolomite. These rocks have been subjected to intense folding and are cut by several high angle faults and low angle thrusts. Mineralization is localized along NE trending thrusts and along steep dipping NE, NNE, NNW, WNW and ENE trending faults and fracture systems. Gold mineralization occurs in variably decalcified and silicified rocks with pyrite, arsenopyrite and quartz. Both oxidized and carbonaceous refractory mineralization occurs.

TARGET AREAS

MAC RIDGE PIT AREA: gold mineralization, including the drill defined inferred resource, is localized along intersecting WNW and ENE trending fault-fracture systems. This mineralization is open to expansion along strike and at depth. Approximately 120 meters to the south of the Mac Ridge pit is another gold anomaly that deserves follow-up. Gold mineralization here occurs along NNE and ENE trending structural zones in Overlap rocks.

LOWER PLATE EXPOSURE: Approximately 1 mile east of the Mac Ridge pit hand trenching exposed variably altered and mineralized Hanson Creek limestone. Recent drilling has intercepts of up to 40 ft of 2.547 g/T Au. This mineralization deserves more detailed mapping and drilling.