

VICTORIA GOLD CORP - RELIEF CANYON PROJECT



Argillically altered Grass Valley shale overlying Natchez Pass limestone.

LOCATION:

18 miles east of Lovelock, Antelope Springs mining district, Humboldt Range, Pershing County, Nevada.

HOLDINGS:

155 unpatented claims (leased from Newmont), 490 100% owned unpatented claims, mineral rights in ten private sections (leased from Newmont-NLRC).

TARGET:

Sediment hosted disseminated Au.

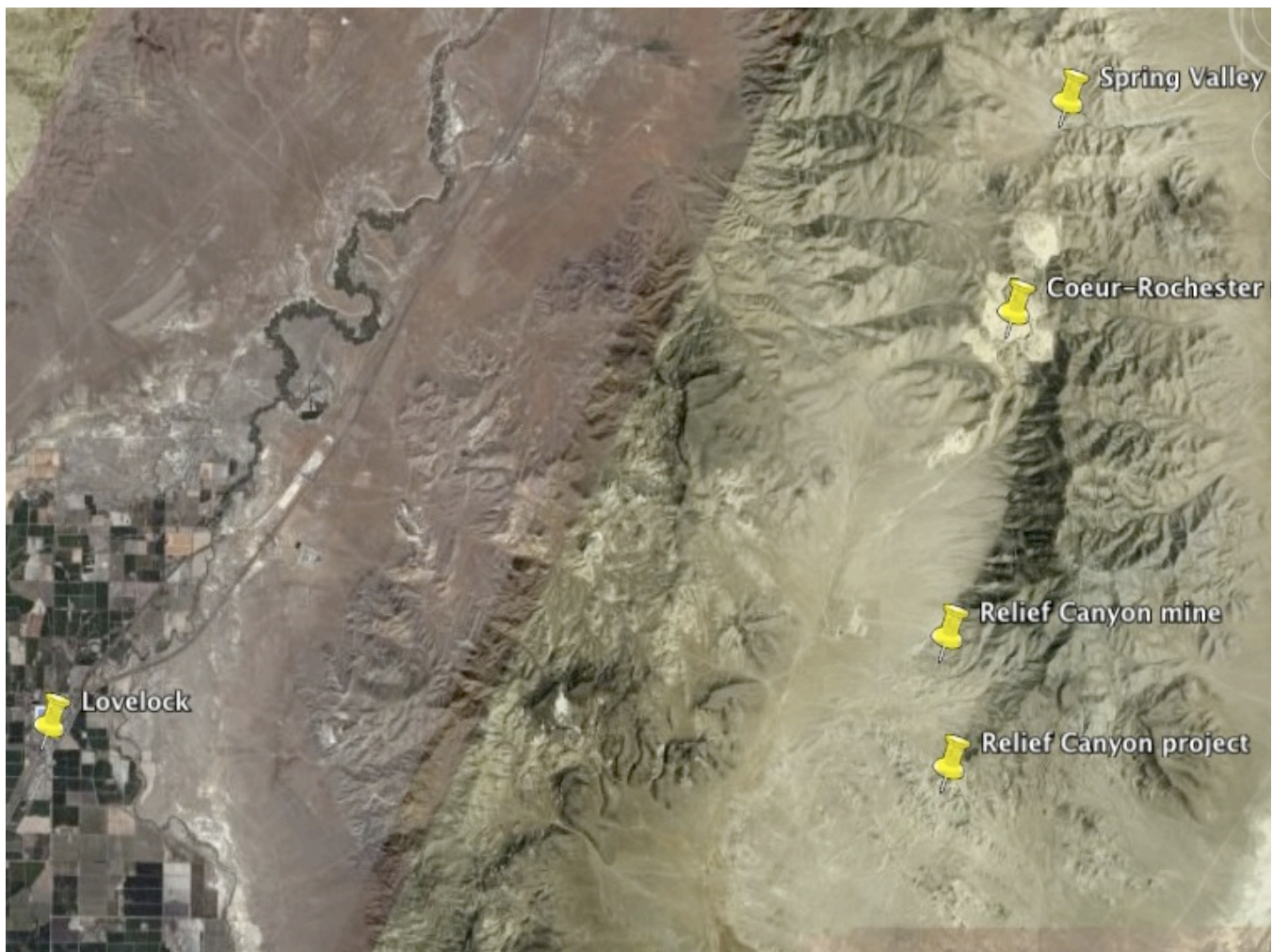
LAND STATUS:

BLM and private.

HOLDING COSTS:

\$87,406/year (BLM and county).

- District scale property position.
- At the intersection of the West and Humboldt gold belts.
- Covers 3/4 of the known width of the West gold belt in the district.
- Historic mercury and antimony mining district.
- Multiple rock chip Au anomalies.
- Widespread argillic alteration and scattered jasperoid outcrops.
- Surrounds Firstgold's near production Relief Canyon mine.
- Relief Canyon mine produced ~430,000 oz Au from 1985-1989 at an average grade of 0.035 opt Au.
- Can be drilled year round.



GEOLOGY

The property is underlain by Permi-Triassic rhyolite and interbedded Triassic limestone, dolomite, sandstone and shale. There is a strong NW oriented structural fabric in the district, expressed by faults, fracture systems and folds. Gold is localized along NW and NS trending structural zones and in inter-formational breccia between the Grass Valley shale and Natchez Pass (Cane Springs) limestone.

TARGET AREAS

RELIEF CANYON PITS AREA: In the North and Lightbulb pits of the Relief Canyon mine, gold is localized along a wide NW trending fracture system that continues onto Victoria controlled ground. Where this NW zone intersects wide NNE trending fracture systems, calcite flooded breccia zones cut by later gold bearing slurry veins occur. Gold mineralization is present in the South pit, part of which is on Victoria controlled ground. Mineralization may also occur to the west of the open pits, offset by Basin-and Range faulting.

MERCURY & ANTIMONY MINES: Reconnaissance mapping in 2006 identified wide spread rock chip gold anomalies in the vicinity of historic mercury and antimony mines in the Antelope Springs district. Gold values ranged from 0.200 g/T Au to >11.0 g/T Au. Mercury occurs as cinnabar in gold barren calcite veinlet swarms and breccias. Gold was found to occur in variably silicified and brecciated rock and in quartz-stibnite veins. There have been past attempts to mine gold in the area, evidenced by a leach pad at the old Pershing mercury mine.